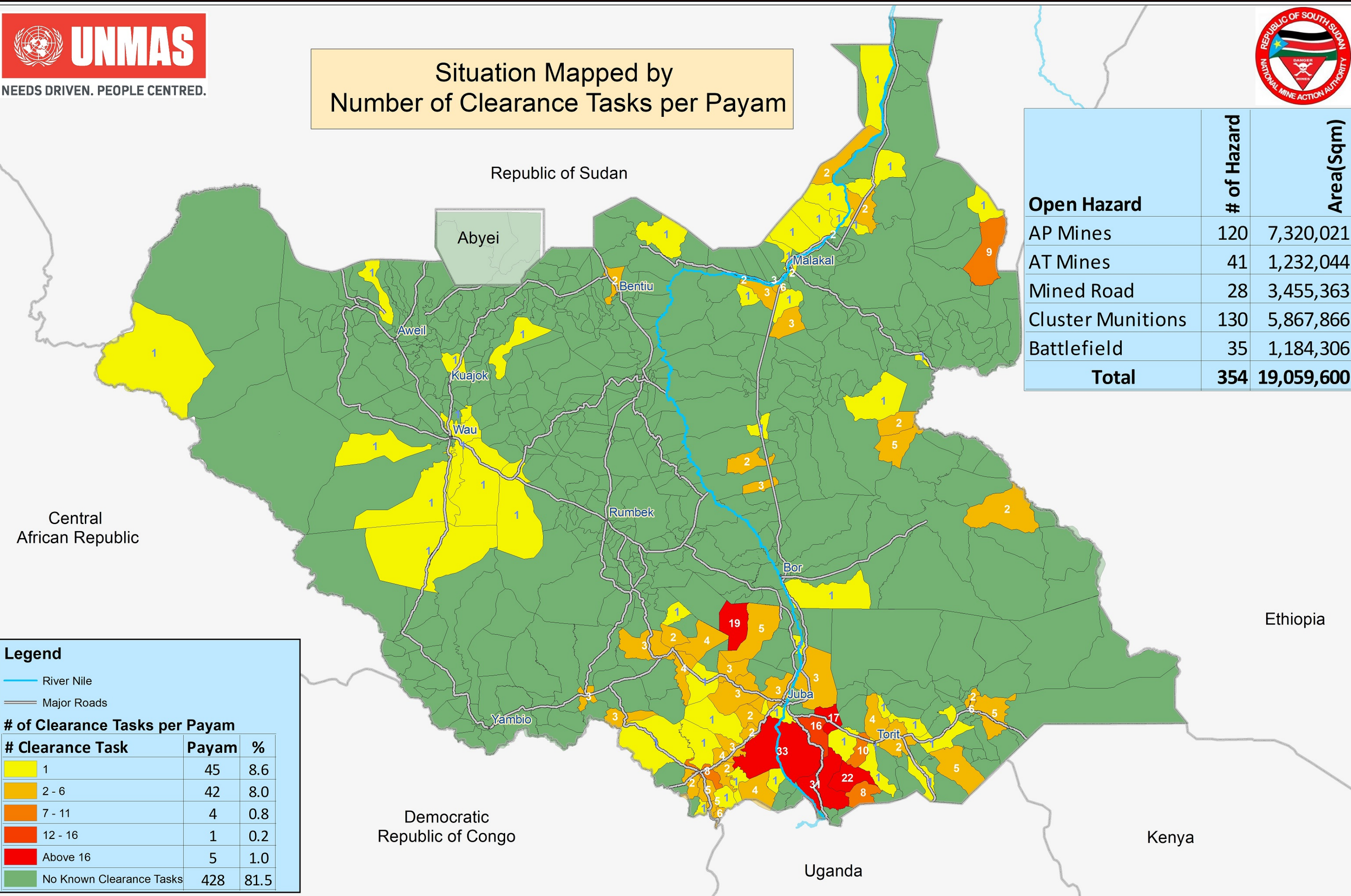


# Remaining Hazardous Areas in South Sudan as of 30 November 2020



Situation Mapped by  
Number of Clearance Tasks per Payam



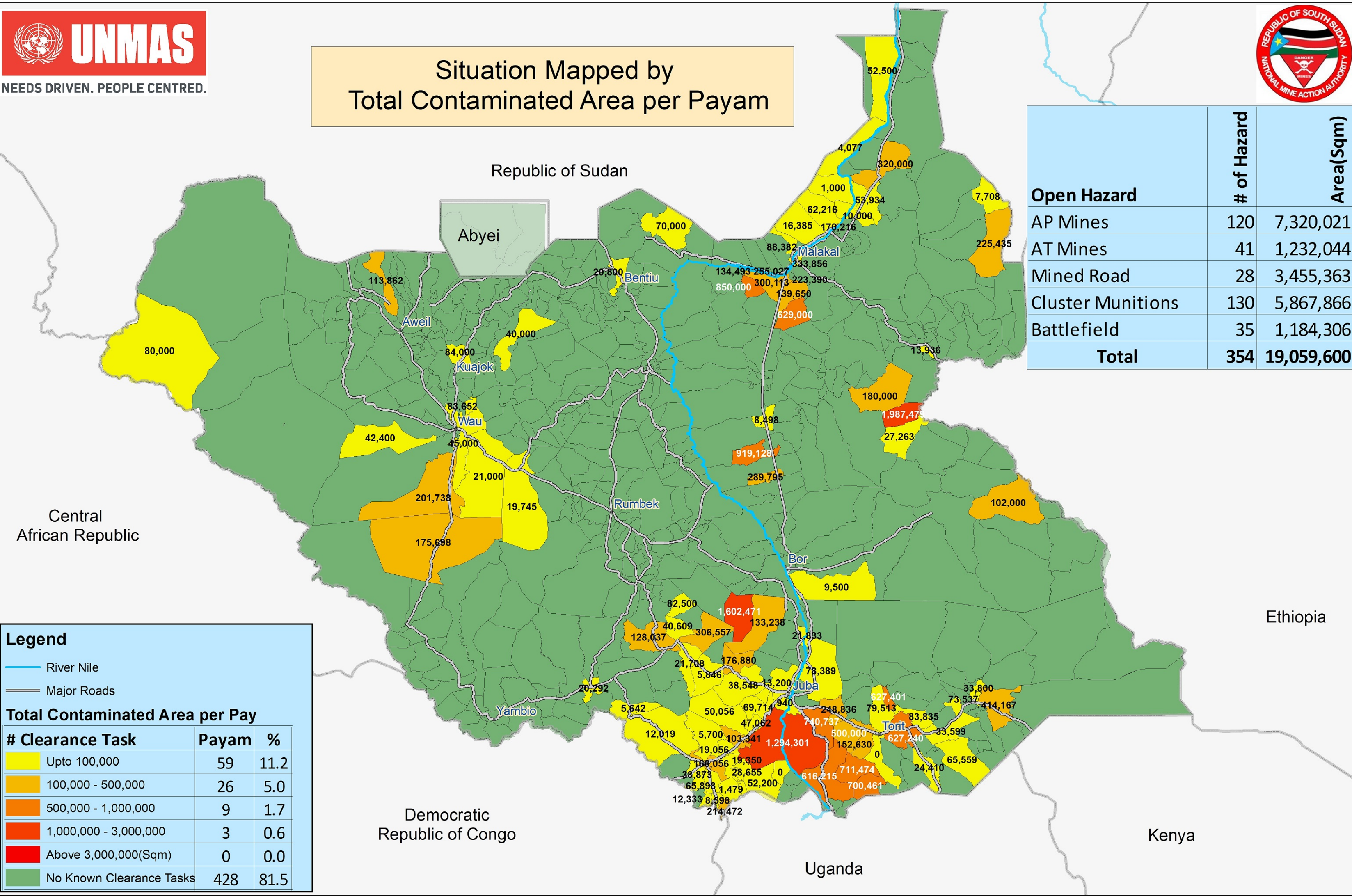
Legend		
— River Nile		
— Major Roads		
# of Clearance Tasks per Payam		
# Clearance Task	Payam	%
1	45	8.6
2 - 6	42	8.0
7 - 11	4	0.8
12 - 16	1	0.2
Above 16	5	1.0
No Known Clearance Tasks	428	81.5

Open Hazard	# of Hazard	Area(Sqm)
AP Mines	120	7,320,021
AT Mines	41	1,232,044
Mined Road	28	3,455,363
Cluster Munitions	130	5,867,866
Battlefield	35	1,184,306
<b>Total</b>	<b>354</b>	<b>19,059,600</b>

# Remaining Hazardous Areas in South Sudan as of 30 November 2020



Situation Mapped by  
Total Contaminated Area per Payam



Open Hazard	# of Hazard	Area(Sqm)
AP Mines	120	7,320,021
AT Mines	41	1,232,044
Mined Road	28	3,455,363
Cluster Munitions	130	5,867,866
Battlefield	35	1,184,306
<b>Total</b>	<b>354</b>	<b>19,059,600</b>

Legend		
River Nile		
Major Roads		
Total Contaminated Area per Pay		
# Clearance Task	Payam	%
Upto 100,000	59	11.2
100,000 - 500,000	26	5.0
500,000 - 1,000,000	9	1.7
1,000,000 - 3,000,000	3	0.6
Above 3,000,000(Sqm)	0	0.0
No Known Clearance Tasks	428	81.5